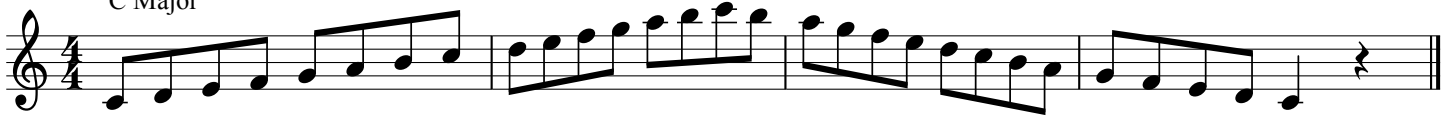


# Flute Technique Karate - Green Band

## SCALES

### Major and minor scales

C Major



A harmonic minor

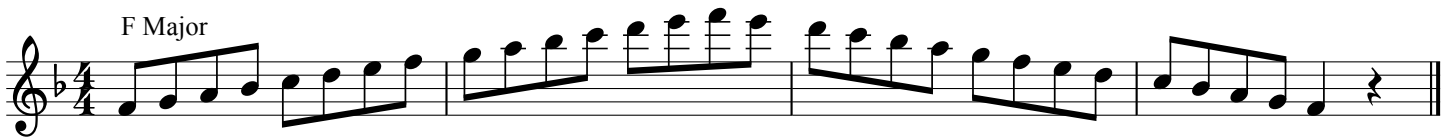


A melodic minor



### Flat Keys

F Major



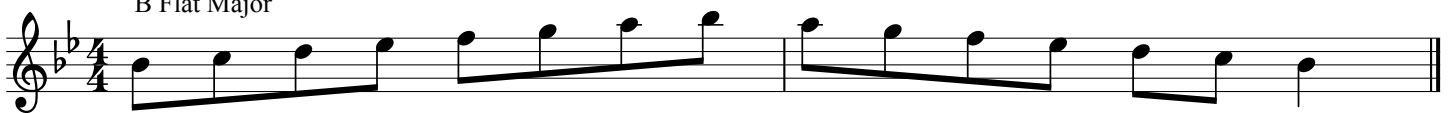
D harmonic minor



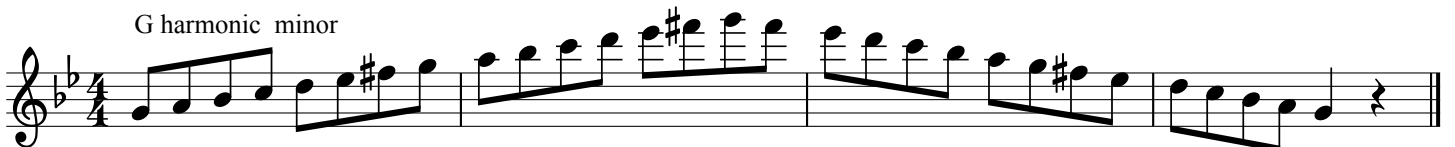
D melodic minor



B Flat Major



G harmonic minor



G melodic minor

*Sharp Keys*

G Major

E harmonic minor

E melodic minor

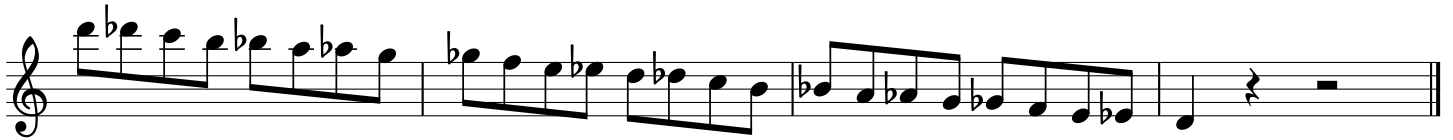
D Major

B harmonic minor

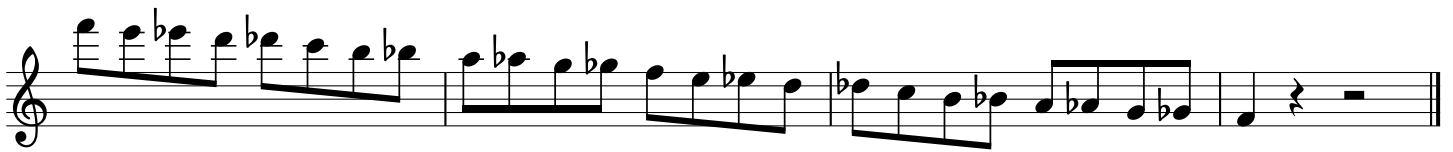
B melodic minor

## Chromatic Scales

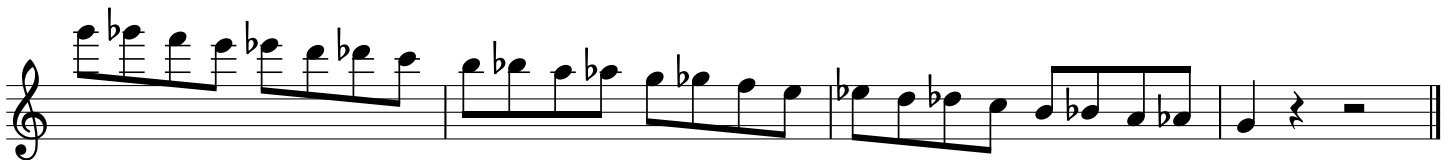
Commencing on D



Commencing on F



Commencing on G



## Scales in 3rds

*Sharp Keys*

G Major



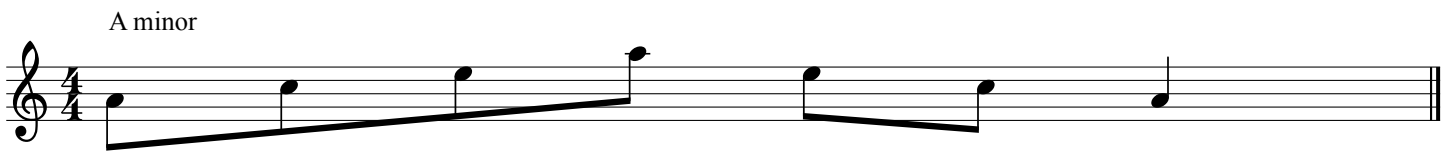
# ARPEGGIOS

## Major and minor Arpeggios

C Major

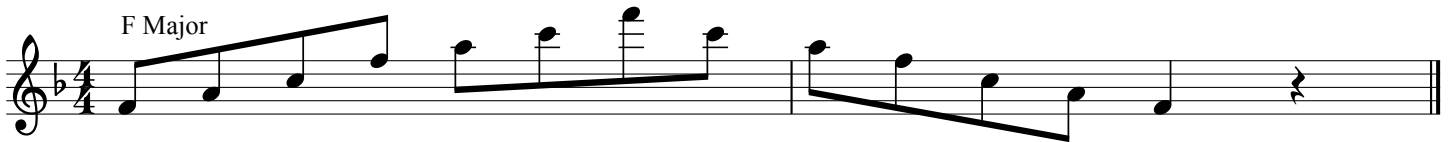


A minor

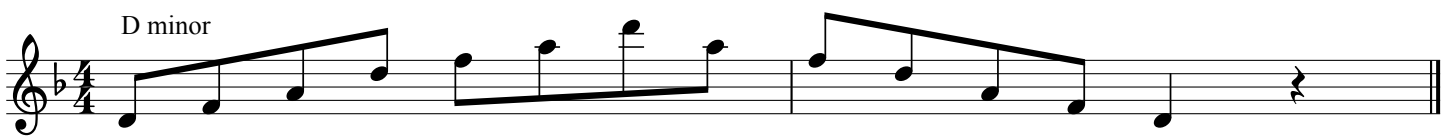


### Flat Keys

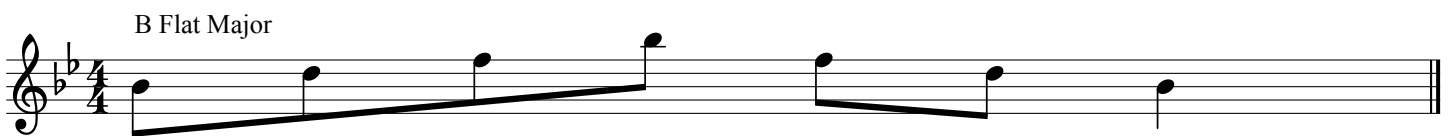
F Major



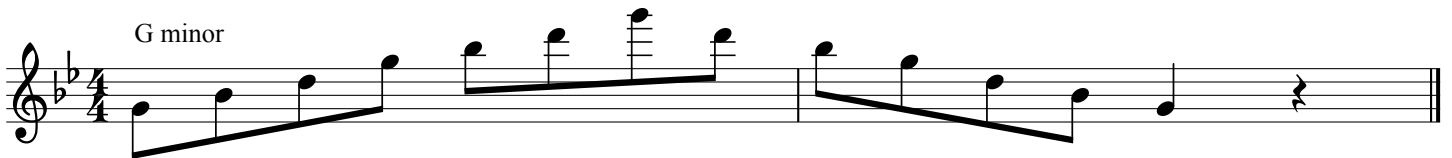
D minor



B Flat Major



G minor

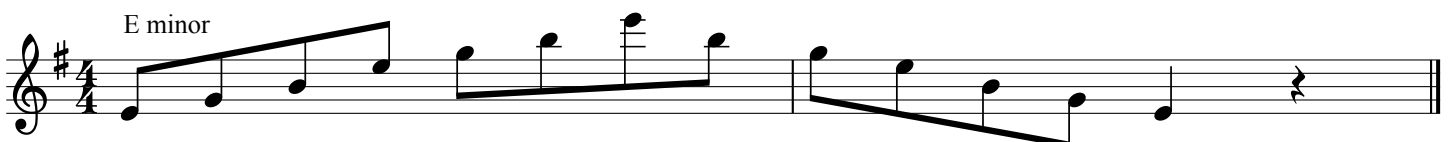


### Sharp Keys

G Major



E minor



D Major

Musical notation for the D Major scale in 4/4 time. The key signature has two sharps (F# and C#). The scale is written on a treble clef staff. It consists of an ascending line of eighth notes: D4, E4, F#4, G4, A4, B4, C#5, D5. This is followed by a descending line of eighth notes: D5, C#5, B4, A4, G4, F#4, E4, D4. The piece ends with a quarter rest followed by a double bar line.

B minor

Musical notation for the B minor scale in 4/4 time. The key signature has two sharps (F# and C#). The scale is written on a treble clef staff. It consists of an ascending line of eighth notes: B3, C4, D4, E4, F#4, G4, A4, B4. This is followed by a descending line of eighth notes: B4, A4, G4, F#4, E4, D4, C4, B3. The piece ends with a quarter rest followed by a double bar line.